



2  2  1  1  2 

206.33m² Total Area

The Cypress | June

The Cypress is a stunning home design offering abundance of living spaces with seamless flow to alfresco entertaining.

A large multi purpose room, welcomes you with views to your own landscaped courtyard. A study room, or hobby room also enjoying courtyard views and plenty of natural light. Enjoy a spacious kitchen with quality inclusions, walk-in pantry, and easy access to alfresco entertaining area.

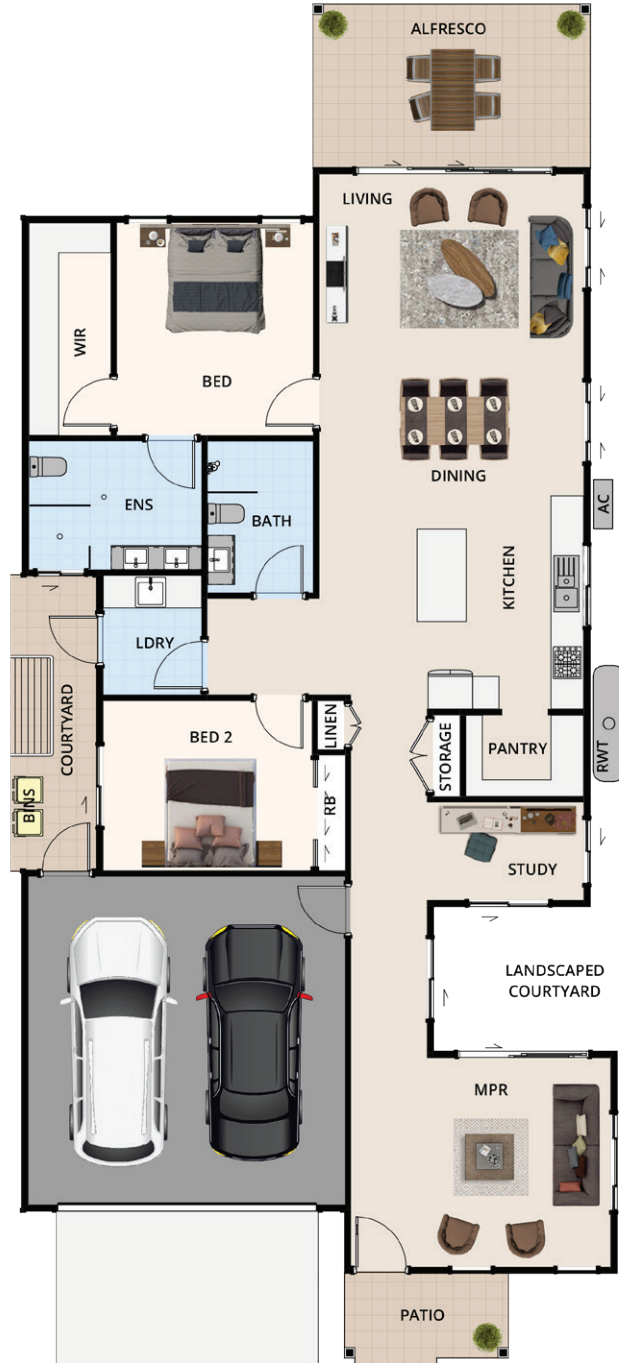
A grand master bedroom with walk-in robes and ensuite with his and hers. A second bedroom with built-in robes and full second bathroom. Double car garage with internal access and a fully fenced backyard.



Call 0477 083 688
sales@stratfordgardens.com.au
stratfordgardens.com.au

The Cypress | June

Living	141.95m ²
Garage	34.86m ²
Alfresco	15.24m ²
Patio	4.65m ²
Courtyard	8.63m ²
Total Area	206.33m²



The facade render and floorplans are provided for illustrative purposes only. Landscaping not included. It may contain upgraded items/finishes not included standard. For detailed home pricing, please talk to a Sales Consultant. All efforts have been made to ensure accuracy of this brochure at time of print.



Call 0477 083 688
sales@stratfordgardens.com.au
 Sales Office 4/150-158 Argyle Street
 Picton NSW 2571
stratfordgardens.com.au

