



2  2  1  2 

202.56m² Total Area

The Lavender

Flowing effortlessly from the front door to the private outdoor areas, The Lavender delivers streamlined sophistication throughout the house.

Starting with a welcoming porch opening into a large and inviting multi-purpose room that can be used as an extra living area. The Lavender provides a stylish and practical open plan kitchen flowing into the living and dining area, ideal for entertaining family and friends.

A large master bedroom with ensuite with his and hers, walk-in robes, plus a second bedroom with built-in robes. Enjoy the separate living areas including the covered alfresco, courtyard and patio.

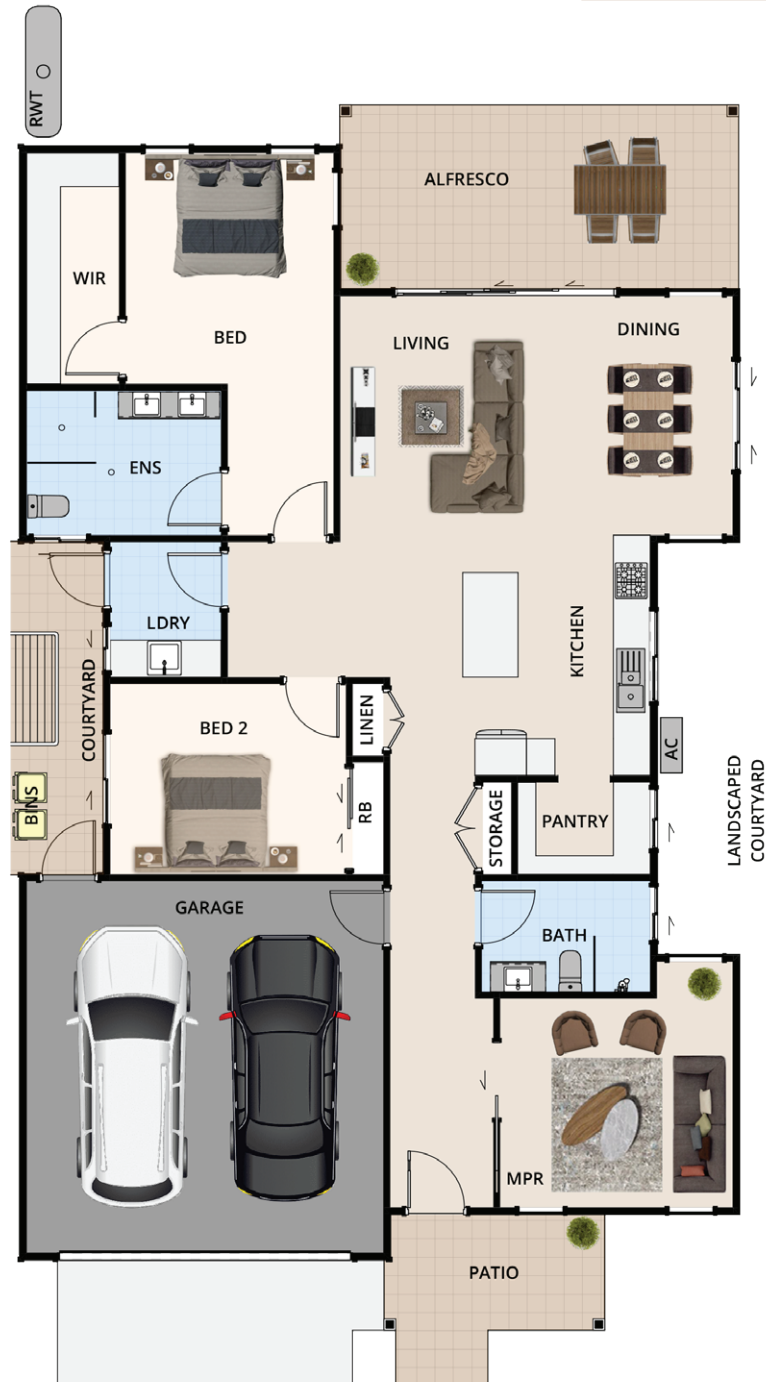


Call 0477 083 688
sales@stratfordgardens.com.au
stratfordgardens.com.au



The Lavender

Living	133.14m ²
Garage	35.09m ²
Alfresco	19.41m ²
Patio	6.67m ²
Courtyard	8.25m ²
Total Area	202.56m²



The facade render and floorplans are provided for illustrative purposes only. Landscaping not included. It may contain upgraded items/finishes not included standard. For detailed home pricing, please talk to a Sales Consultant. All efforts have been made to ensure accuracy of this brochure at time of print.



Call 0477 083 688
 sales@stratfordgardens.com.au
 Sales Office 4/150-158 Argyle Street
 Picton NSW 2571
 stratfordgardens.com.au

